



LIGHT COLUMN PEDESTRIAN, SERIES 600

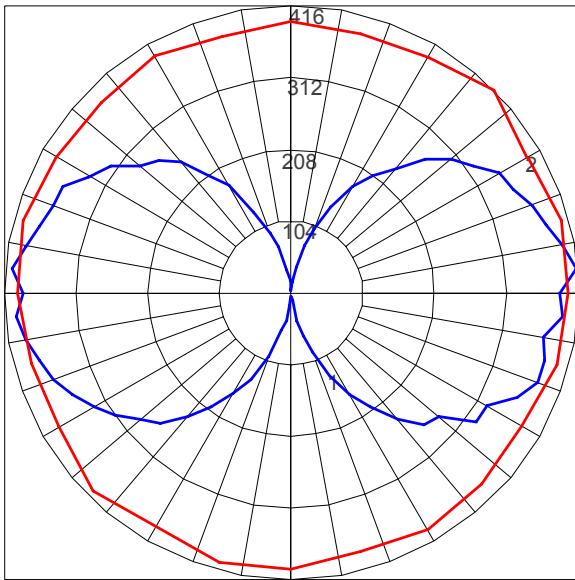
LIGHTING PLOTS

LAMP DESCRIPTIONS

LAMP	DESCRIPTION	BASE	COLOR TEMPERATURE	LUMINAIRE LUMENS*	B.U.G. RATING
3000K LED	32W custom LED light engine	N/A	3,000K	3790	B1-U5-G2
4000K LED	32W custom LED light engine	N/A	4,000K	3790	B1-U5-G2

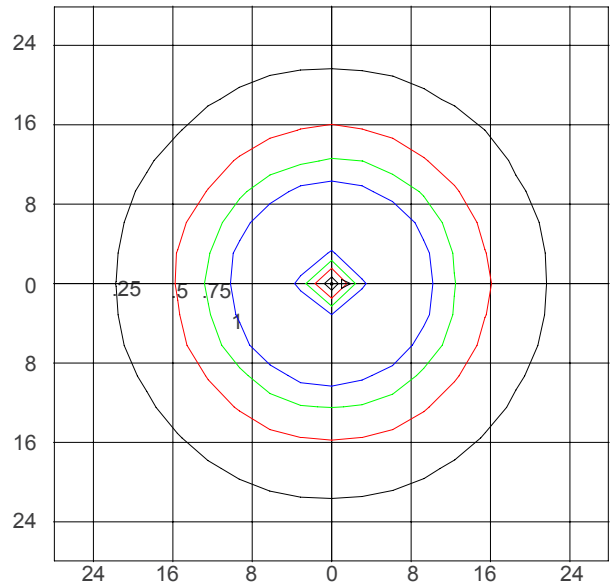
*Luminaire lumens represents the absolute photometry for the luminaire, and indicates the lumens out of the entire fixture.

POLAR CANDELA PLOT (32W LED, 3000K/4000K)



Maximum Candela = 415.52; Located at Horizontal Angle = 45; Vertical Angle = -95
 #1 - Vertical Plane Through Horizontal Angles (45 - 225) (Through Max. Cd.)
 #2 - Horizontal Cone Through Vertical Angle (95) (Through Max Cd.)

ISOFOOTCANDLE PLOT (32W LED, 3000K/4000K)



Isofootcandle Plot shows light distribution pattern at ground level with custom LED light engine with no shield. Readings have been taken assuming the photometric center of the luminaire to be 8.93 feet above ground level. IES files for standard lamps are available on our website.